



CLOGAMP Help Notes for Cloggers

Written by Steve Smith Graphics by Roger Henthorn

(Last Revision: 04/11/08 by Jayne Treadwell)



ClogAmp is a music player particularly tailored to the needs of clogging instructors. It is widely used throughout Germany and is well known for its easy installation, ease-of-use and speed. To download the newest version of CLOGAMP, please go to either clogamp.com or http://sourceforge.net/search/?type_of_search=soft&words=clogamp

First of all, let's give MARTIN ROHRBACH a standing ovation for his development of this wonderful software and for his generous sharing with all Cloggers. Martin is from Germany and quite a gifted dancer. ClogAmp is a huge gift to our community and we are all very, very grateful for it. Thank you Martin!

Because there is little information currently available on how to operate, use and customize ClogAmp, I have written these notes in the hope that you find them helpful. These are my personal thoughts and suggestions and in no way are meant to function as official documentation for ClogAmp.

FILELIST

The FILELIST is the large window that appears when the program boots up. (Refer to the last page for a screen shot of ClogAmp.) The first time you open ClogAmp, this page will be blank and ***No directory selected*** will be displayed above the Title bar.

The Filelist is comprised of folders you select, usually from within My Music. You can select the file which houses the songs you want to import by clicking on the yellow folder in the lower left hand corner of the screen. The "Choose a directory" window will open.



Click on the "+" sign beside C:. **Do NOT put a check in the C: "box"**. Doing so will import your entire "C" drive into ClogAmp! Next locate your My Music folder, which is usually found under "My Documents" and sometimes by individual "User". Check the box beside **My Music**. At the bottom of the window check **Include Subdirectories**. This will import your entire music library into the Filelist.

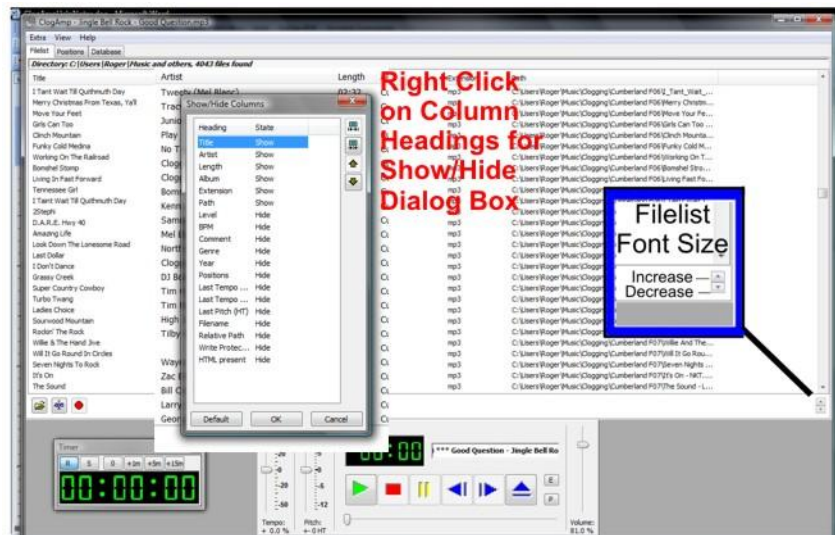
You can manage the folders you want to import into the Filelist by clicking on the “+” sign beside My Music, **unchecking the My Music box** and **checking ONLY** the My Music subfolders you want to import. Leaving the “Include Subdirectories” box checked will enable you to import all the music within those folders. If you want, save those particular folders with a name to make them easier to load again (see Creating a Profile).

Important: Your music files **MUST** be in either **mp3** or **wav** file format to be accepted by ClogAmp. However, **since file settings** (cue points, tempo, etc) **only save in the mp3 file format**, you may want to convert all your music files to the mp3 format. If they are in wma format, they must first be converted. I would suggest converting them to mp3 format and this is the WMA converter that I use:

<http://www.bestshareware.net/download/wmaconverter-platinum.htm>

To **select the font size** you desire in the FILELIST window, click on the UP and DOWN directional arrows in the lower right hand portion of the screen. The UP arrow will increase the font size; the DOWN arrow will decrease font size.

To **configure column headings** to your liking, right click on the horizontal bar at the top of the FILELIST, where the column headings are listed. There you will be able to either “Hide” or “Show” the various columns.



To **SELECT A SONG TO PLAY**, do **any one** of the following:

1. Select the song with a click of the mouse.
2. Use the up and down directional keys to highlight a song OR hitting Page Up or Page Down for even faster scrolling.
3. Type in the name of the song you want by holding the Shift Key down to go directly to the song that you are typing. This usually takes only three keystrokes to bring up the song, but you must type them fairly quickly. If you don't hold down the Shift key, you will likely encounter difficulty since so many of the keys are configured to certain program functions that it is likely that you will engage those processes accidentally. Please note that the column heading named “Title” must be the far left column in your Filelist and listed first in your dialog box in order to

use this search feature. Right click on the column headings to select the type and order of column headings.

4. Hit CAPS LOCK button on the laptop, then type in name of song (somewhat easier than holding down shift key). However, you must remember to disengage CAPS LOCK for program to work properly again.

To **LOAD A SONG IN THE PLAYER**, do **any** of the following:

1. Hit the Enter Button.
2. Double click on the highlighted song.
3. Hit the space bar.

To **PLAY** a song:

1. Hit the keystroke “p”.
2. Use your mouse to click on the green triangle on the player.



You can either choose to have the Player show how much time has elapsed since the song started playing OR show how much time is remaining. Click on the time display to toggle between the time displays.

You can also designate a key to toggle the time display by going to **Extra→Configure Keys→Toggle Time/Remaining**. Designate the key you want to assign to that function. For more on key configurations, see later section titled, “Configuring The Keyboard.”

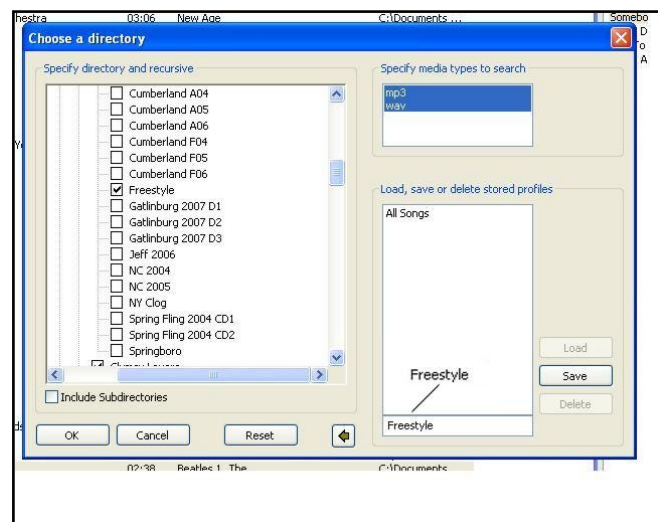
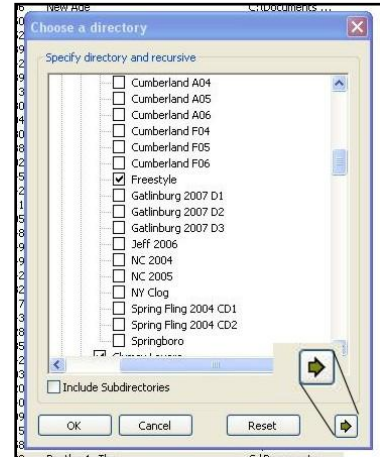
NOTE: Attempting to play a song before the filelist completely loads could cause ClogAmp to crash. Also, closing your laptop while ClogAmp is open could cause ClogAmp to crash.

CREATING A PROFILE

There may be times that you want to only load certain songs in your Filelist. ClogAmp enables you to set up a “profile” that will bring up only those songs. For example, let’s imagine that you have a folder in My Music that is labeled as “Freestyle.” Here’s how to set up that profile:

1. First, you would open the directory by clicking the yellow folder icon in the Filelist. Then you would look under “Choose a directory” and click on the small square beside Freestyle. A checkmark would then appear in the box. If there are any other items checked that you would NOT want included in the Freestyle profile, you would uncheck them.
2. Click on the arrow pointing right (see picture) to open the Profile dialog box.
3. Type in the name of the profile under “Load, save or delete stored profiles.” Type “Freestyle” in the rectangular box at the bottom.
4. Then, click “save” and you’re done!

Anytime you want to load a particular profile, open up the directory, click on that profile, click “OK” and that profile will appear in your Filelist.



Warning: Do not put a check in the C: "box". Doing so will import your entire "C" drive into ClogAmp!

Profiles can be kept to a manageable size when you separate your songs in subfolders within your My Music folder based on their type, i.e. Hoedown, National Dance List, Holiday music, Line dances, etc, or any other way you would like to sort your music. In some instances you may have the same song in more than one folder. In that case follow the instructions in Song/File Duplication (in later section) to insure all copies have cue points.

PLAYLISTS

Playlists are comprised of songs that you pull from your folders to create a customized “playlist.” For example, if I want a group of songs from the National Dance List, I would create a playlist of those songs and then save it as “National Dance List.”

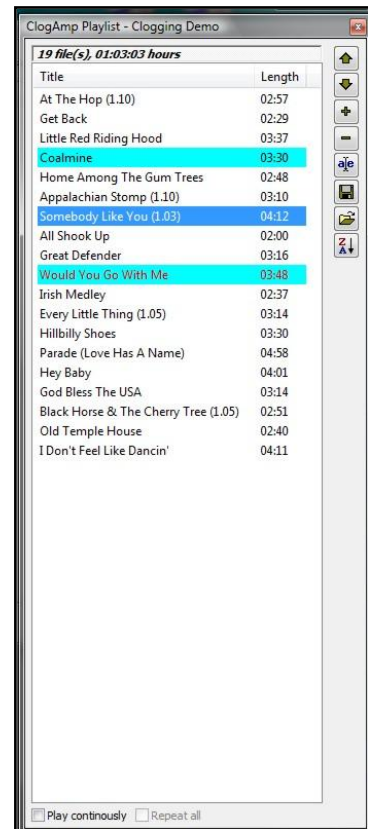
Playlists are easily created by:

1. Highlighting a song in the Filelist and dragging it to the Playlist, or by
2. Highlighting a song, right clicking on it, and then clicking on “Append to Playlist”.

To provide you with a visual record of songs played in the playlist (see image on right), they will be highlighted in BLUE when played (*Coalmine* and *Would You Go With Me* have been played; *Somebody Like You* is currently being played), if you check “MARK SONGS WHEN THEY HAVE BEEN PLAYED” under the tabs of **Extra**→**Options**→**Playlists**.

You can play a song in the Playlist by highlighting it and

1. Pressing ENTER.
2. By double-clicking on the song.
3. By pressing the space bar. However, you will have to press "p" (for PLAY) unless you check the following box: **START PLAYING WHEN A SONG IS SELECTED**. Get there by going to **Extra**→**Options**→**Playlists**.



At the bottom of the Playlist (refer to image above right) is a box you can check which says PLAY CONTINUOUSLY. This is very cool if you want to play songs continuously and not have to manually start each song. This is useful if you need to take a quick trip to the porta pottie ☺ or if you have a warm-up period at a dance so that you don't have to stay near your laptop.

Right click on any song in the Playlist and you will find a smorgasbord of options that let you remove songs, change the order of your songs, add silences between songs and many other ways that can help you to fine tune the playlist.

Create a new Playlist by clicking on the "-" sign in the playlist menu bar and then click "Remove All Items". This clears the playlist and allows you to create a new one which you can save under a new name.

You can view the Playlist in three ways:

1. Go to **Extra→Configure Keys→Toggle Playlist**, then type in the letter of the key you want to use to bring up the Playlist. I chose “w” but choose whatever works best for you, or
2. Go to View and click on Playlist, or
3. Click on “P” in the Player at the bottom of your player control screen.



Song/File Duplication

Each song you place in a My Music folder creates a separate file on your computer. If you have the same song saved in several My Music folders then you may have several different files for that song showing up in ClogAmp.

Since cue points are saved to the particular mp3 song file you are using when you set them in ClogAmp, once you have set your cue points you may want to copy that song file into any *additional* My Music folders that have the same song selection in them. By doing so, all copies of that song file will have the same cue points.

If you rename your My Music folders/subfolders after you have used them to set your profiles, OR move them to another location, OR delete any of them, you will need to reset your profiles and playlists.

SETTING VARIOUS OPTIONS

Extra→Options→Audio

I set (based on Martin's recommendation) .20 as the amount of time for fade-ins and jumps. Feel free to experiment.

Extra→Options→Tempo and Pitch

Check these boxes if you want the program to remember your last settings. I love this feature! Under "play event" in this dialogue box, determine the number of seconds that you want to elapse when playing a song before you want the program to remember your settings.

Setting Beats per minute (BPM)

If you are interested in knowing how many beats per minute a particular song has, go to **View→BPM Counter**. I would suggest **unchecking** "Auto detect" because it's not usually accurate. Press the space bar, as directed to the beat of the music, until it says "finished!" in green lettering.

Timer

ClogAmp has a built-in Timer window so you won't miss the end time of a workshop or patter call. To see the timer, go to **View→Timer**.



Once you have set the Timer for the allotted time, you can either leave it in view, if you want to monitor it, or you can close it. If you close it, it will reappear and flash when your specified time has expired!

You can bring the Timer into view by:

1. Going to the VIEW tab and then clicking on TIMER, or
2. Setting a key (I use "t") to bring it up. Do this by going to **Extra→Configure Keys→Toggle Timer**, then type in the letter of the key you want to use to bring up the Timer).

EQUALIZER

You can configure the equalizer as you desire and save it under “Save Custom.” You can bring up your saved settings at any time by clicking “Presets” and then “Load Custom.” This is particularly helpful for songs that need adjustment for either too much bass or too much treble.

Fortunately, the next release of ClogAmp will “remember” the equalizer settings for each song. You will be able to enable this feature by going to **Extra→Options→Data** and check “Save and restore last equalizer setting per song.”

You can bring the Equalizer into view by:

1. Going to the VIEW tab and then clicking on EQUALIZER, or
2. Setting a key to bring it up. Go to **Extra→Configure Keys→Toggle Equalizer**. Then type in the letter of the key you want to use to bring up the Equalizer, or
3. Clicking on the “E” in the player area of ClogAmp.



CONFIGURING THE KEYBOARD

One of the very best components of ClogAmp is its ability to allow you to **determine which keys you want to control the various functions!** This allows great flexibility for each individual user to decide what system of commands works best.

To configure the command keys to your liking, go to **Extra→Configure Keys**. Many command keys have already been allocated to numerous functions. If you see one that you would like to change, the good news is that you can! The important thing to remember is this: if you want to use a key that has already been allocated to another function, you must replace that key before you can use it. For example, if you wanted to use the letter “p” for something other than the default setting of “play,” you would have to:



1. Click on the function that you want to reset the key for. In this case, you would click on “Play.”
2. Delete the letter in the lower left hand corner of the dialog box where it says “key.”
3. Type in the letter you prefer instead.
4. Now go to the function where you want to use the letter “p” and highlight it.
5. Delete the designated letter that has been assigned to it.
6. Type in “p”.
7. Click on “Take Key” and you’re done.

I’ll share my personal configurations that work well for me. I use ...

Key Function

- for increasing tempo (1%). (When using you will actually hit the ">" key but you will want to set the configuration to "." so you don't have to hit the Shift key to trigger the ">" sign.)
- for decreasing tempo (1%). (When using you will actually hit the "<" key but you will want to set the configuration to "," so you don't have to hit the Shift key to trigger the "<" sign.)
- T** for toggling the Timer

Key Function

Q for toggling the Equalizer

W for toggling the Playlist

A for pausing music (it is next to s, which stops the song)

F1 for decreasing pitch (1%)

F2 for increasing pitch (1%)

Z To toggle between the Filelist and the Playlist

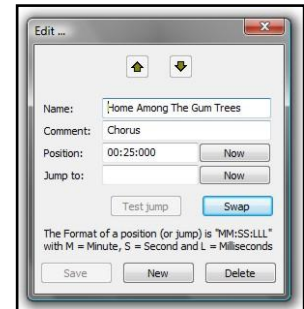
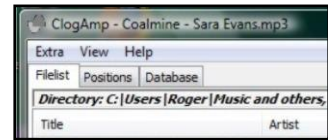
- for decreasing volume

= for increasing volume. (You'll notice that the upper case letter is "+" but you will want to set the configuration to "=" so you don't have to hit the Shift key to trigger the "+" sign.)

H to toggle the time remaining in the player. (This allows you to either see how much time has elapsed as you play the song OR how much time remains in the song. It's your choice.)

SETTING CUE POINTS

1. Select the song that you want to set cue points for.
2. Click the “Positions” tab in the upper left hand corner.
3. Play the song that you want to set cue points for.
4. Hit “pause” at the point where you want to insert a cue point.
5. Left click on the “Positions” tab.
6. Right click on any space in the “Positions” box and left click “add”.
7. Fill in “Name.” I usually put the name of the cue point here, such as “Part A”.
8. Under “Comment”, I usually put the names of the steps for that section here. For example: 2 Basics, Fancy Double.
9. Left click “now”, located on the same line as “Position:”
10. Hit “save.”



11. You should see the cue point set as “#1.”
12. Restart the song and then hit the number “1” on your laptop. If it is the right spot then you’re set. If not, then adjust the time, save it, and try it again until you get it right. It allows you to adjust the milliseconds so you can make it VERY accurate! The time is set forth as:

MM (minutes):SS (seconds):MLS (milliseconds)

13. Do the same as above for all other cue points.
14. Once finished, initiate any cue point by pressing the appropriate number on your keyboard.

Important: File settings (cue points, tempo, etc) **only save in the mp3 file format.**

You can **set the font size of the cue points** by clicking on the UP and DOWN directional arrows in the lower right corner of the screen. I make them large so they are easy to see. Refer to the FILELIST section for a graphic of these arrows.

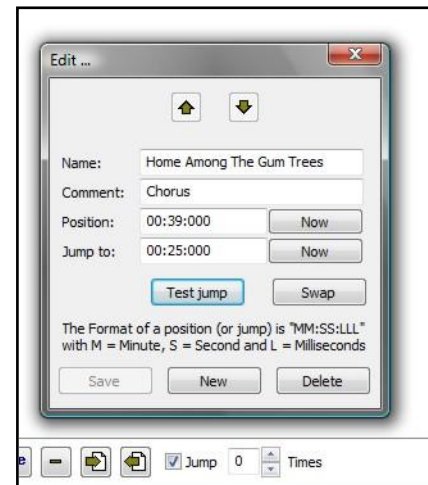
You can customize your “Positions” page so that you have your dance cues on the same page as your cue points! After setting all your cue points, create a cue point named “Sequence”, set the “Position” a second or two earlier than the length of the song, and list the sequence of your dance in the “Comment” section. To create a visual break between your cue points and your “Sequence”, create an unnamed cue point by hitting the space bar for the “Name”, leave the “comments” section blank and set a position that is between your last cue point and your “Sequence” cue point.

LOOPING

Looping is repeating a section of music as many times as needed to lengthen your song and is particularly useful for songs that you want to play for a long time, like a hoedown.

Looping is very similar to setting cue points, except that you are setting two cue points: the beginning (which is the start of the section you want to repeat) and end (which is the end of the section you want to repeat) of your loop.

1. Hit “pause” at the point where you want the **end of your loop** to be. (In this example, at the 39-second mark.)
2. Click on “Now” located on the same line as “Position:” which will then indicate where you want the end of the loop to be marked.
3. Make adjustments as necessary (see setting cue points).
4. To set the **beginning of your loop**, play the music and hit “pause” at the point you want your music to loop back to. (In this example, at the 25-second mark.)
5. Click on “Now” in the “jump to” tab.
6. Click on “Save.”
7. Click on “Test jump” to see if you need to fine tune your loop.
8. At the bottom of the dialogue box, you can indicate how many times you want the loop to play before the song plays through to the end.
9. The example shown above will loop back to the 25-second mark of the song and play through to the 39-second mark.



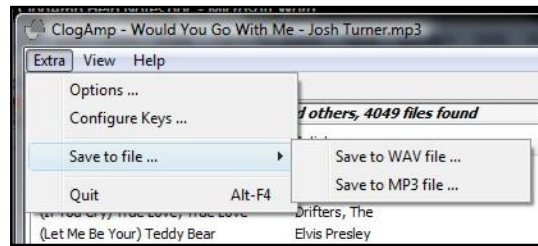
You have three options once you have created a loop:

- You can put a “checkmark” in the box labeled “jump” at the bottom of your dialogue box, with “number of times” set to “0,” the song will loop indefinitely (see above graphic).
- You can put a “checkmark” in the box labeled “jump” and denote the number of times you want it to loop before playing all the way through.
- You can leave the box “jump” unchecked and the song will play normally.

You can also **set the font size of this screen** by clicking on the UP and DOWN directional arrows in the lower right corner of the screen. I make them large so they are easy to see. Refer to the FILELIST section for a graphic of these arrows.

BURNING CD'S

You can easily burn a music selection in MP3 format or WAV format (which is typically used for CD players). Go to **Extra→Save to file** and burn your selection to the CD or save the file on your desktop or another folder. The really cool thing is that it will burn the music selection at the tempo you last played it at (assuming that you have check marked the “tempo and pitch” boxes under **Extra→Options→Tempo and Pitch**).



Please note that while tempo, pitch and equalizer settings will transfer when you burn a song to a cd, **any loops or jumps you have created will not.**

MISCELLANEOUS TIPS

When running music through an amplifier, experience has shown that what works best is **keeping your laptop volume on a LOW level**, while using the amplifier to increase the volume to desired levels. Otherwise, the music will likely become distorted if your laptop volume is too high.

The music can be started from any position within the song by hitting the “F” key to move forward. Hitting the “B” key will move you 5 seconds backwards in the song.

If you are unsure of what a button does, try to hover over it with the mouse to get a tip.


ClogAmp never crashes ☺. If it does anyway, remember that deleting 'clogamp.ini' and/or 'clogamp.db' will reset all settings and usually fix the problem. ClogAmp is designed to have a very small footprint on any system and in fact does not touch any files outside of its installation directory. On installation, it is about 1MB in size but it uses a database that grows depending on the amount of files you are using and how often it's used.

ClogAmp is started by running the main executable – ClogAmp.exe. It will create the files 'clogamp.ini' and 'clogamp.db' in the directory where the executable is located. Renaming those two files can solve potential problems (remember that, in case ClogAmp happens to not work when you really need it on stage), as it will reset all settings and clear the database (renaming the files rather than deleting them allows you to go back to them and more importantly to send them to the developers to see what went wrong). When moving a ClogAmp installation, make sure you move the **whole content of the installation folder**, not just the executable.

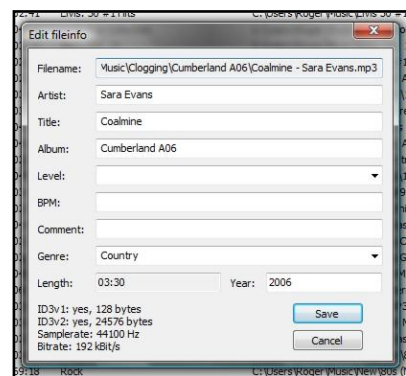
Use Win+C to bring ClogAmp to the front – no matter where it was before.

All settings and positions you save for a song file are saved directly in the file. If you transfer the song file to another computer on which ClogAmp is installed, the saved settings and positions travel with it.

ClogAmp can read both MP3 and WAV files. **It cannot play songs directly from a regular CD** (CDA file). The files must be ripped to the computer first.

In both the Filelist and the Playlist, you can highlight a file name and click on the edit button  to edit the information for that file. You can change the artist, title, album, difficulty level, BPM, genre, year and add a comment to the file.

Under the Database tab, you can find information on the songs that you have played. ClogAmp keeps track of the songs played, when they were played, and how many times you played each song.



Additional program information is available at <http://www.clogamp.com>.

If you have any questions, additions or corrections, please contact either Jayne Treadwell (Learn2Clog@hotmail.com) or Roger Henthorn (cscloggers@fuse.net).

Directory: C:\Users\Roger\Music\and others, 863 files found

Title	Artist	Length	Album	Path
(The System of) Doctor Tarr and Prof...	Alan Parsons Project	04:22	Definitive Collection	C:\Users\Roger\Music\Alan Parsons Pro...
100 Years	Five For Fighting	04:10	Unknown Album (3/30/2007 11:54:0...	C:\Users\Roger\Music\100 Years - Five ...
2StepN	North Mississippi All-Stars	02:48	Cumberland F06	C:\Users\Roger\Music\Clogging\Cumbe...
25StepN	North Mississippi All-Stars	02:48	Gatlinburg 2007	C:\Users\Roger\Music\Clogging\Gatlinb...
99.9 Percent Sure	Brian McComas	03:19	Country	C:\Users\Roger\Music\Clogging\99.9 P...
99.9% Sure	Brian McComas	03:20	Spring Fling 2004 Cd 1	C:\Users\Roger\Music\Clogging\Spring ...
A Change Would Do You Good	Sheryl Crow	04:07	Csc 06	C:\Users\Roger\Music\Clogging\CSC 06...
A Country Boy Can Survive	Hank Williams Jr.	04:15	Al	C:\Users\Roger\Music\VA Country Bo...
A Flag Of Our Own	John Williamson	03:30	Anthemns - A Celebration Of Australia	C:\Users\Roger\Music\Anthemns - A Cel...
A Little Less Conversation	Elvis Presley	03:33	Clogging Cruise	C:\Users\Roger\Music\Clogging\Gatlin...
A Little Less Conversation (Remix)	Elvis Presley	03:52	Ny Clog	C:\Users\Roger\Music\Clogging\NY Clo...
A Number On My Back (The Wallaby ...	John Williamson	03:36	Anthemns - A Celebration Of Australia	C:\Users\Roger\Music\Anthemns - A Cel...
A Whale Of A Tale	Kirk Douglas	02:08	Pirates of The Caribbean	C:\Users\Roger\Music\Clogging\VA What...
Ace In The Hole	George Strait	02:50	Beginner 01	C:\Users\Roger\Music\Clogging\Beginn...
Adagio for Strings	Bond	04:23	Classified	C:\Users\Roger\Music\Bond - Classified...
Advance Australia Fair	John Williamson	01:15	Anthemns - A Celebration Of Australia	C:\Users\Roger\Music\Anthemns - A Cel...
Against The Grain	Garth Brooks	02:25	Csc 01	C:\Users\Roger\Music\Clogging\CSC 01...
All American Bluegrass Girl	Rhonda Vincent	03:15	Gatlinburg 2007	C:\Users\Roger\Music\Clogging\Gatlinb...
All I Can Do	Jump 5	03:26	Csc 09	C:\Users\Roger\Music\Clogging\NY Clo...
All I Have to Do Is Dream	Barry Manilow	02:48	50's, The	C:\Users\Roger\Music\Barry Manilow\A...
All Night Blues	King Willie	02:49	Columbus May 06 A	C:\Users\Roger\Music\Columbus May 0...
All Shook Up	Elvis Presley	06:20	Beginner 01	C:\Users\Roger\Music\Clogging\Beginn...
All Star	Clogging	03:34	Csc 01	C:\Users\Roger\Music\Clogging\CSC 01...
All Things	Wildlife	02:48	Columbus May 06 A	C:\Users\Roger\Music\Columbus May 0...
All You Really Need Is Love	Brad Paisley	02:56	Clog Fest 2002	C:\Users\Roger\Music\Clogging\Clog Fe...
All You Really Need Is Love	Brad Paisley	02:46	Clogging Cruise	C:\Users\Roger\Music\Clogging\Gatlin...
All You Really Need Is Love	Brad Paisley	02:48	Springboro	C:\Users\Roger\Music\Clogging\Springb...
Amazing Life	DJ Bobo	03:29	Cumberland Fall 2007	C:\Users\Roger\Music\Clogging\Cumbe...

Filelist

Playlist

19 file(s), 01:03:03 hours

Title	Length
At The Hop (1.10)	02:57
Get Back	02:29
Little Red Riding Hood	03:37
Coalmine	03:30
Home Among The Gum Trees	02:48
Appalachian Stomp (1.10)	03:10
Somebody Like You (1.03)	04:12
All Shook Up	02:00
Great Defender	03:16
Would You Go With Me	03:48
Irish Medley	02:37
Every Little Thing (1.05)	03:14
Hillbilly Shoes	03:30
Parade (Love Has A Name)	04:58
Hey Baby	04:01
God Bless The USA	03:14
Black Horse & The Cherry Tree (1.05)	02:51
Old Temple House	02:40
I Don't Feel Like Dancin'	04:11

Play continuously Repeat all

Sara Evans - Coalmine (03:30)

01:06

Volume: 100.0 %

Tempo: + 0.0 %

Pitch: + -0 HT

Edit File Folders